



India Meteorological Department

(Ministry of Earth Sciences)

NATIONAL BULLETIN NO.: 09 (BOB/03/2023)

TIME OF ISSUE: 2045 HOURS IST

DATED: 02.08.2023

FROM: INDIA METEOROLOGICAL DEPARTMENT (FAX NO. 24643965/24699216/24623220)

TO: CONTROL ROOM, NDM, MINISTRY OF HOME AFFAIRS (FAX.NO. 23093750)

CONTROL ROOM NDMA (FAX.NO. 26701729)

CABINET SECRETARIAT (FAX.NO.23012284, 23018638)

PS TO HON'BLE MINISTER FOR S & T AND EARTH SCIENCES (FAX NO.23316745)

SECRETARY, MOES (FAX NO. 24629777)

H.Q. (INTEGRATED DEFENCE STAFF AND CDS) (FAX NO. 23005137/23005147)

DIRECTOR GENERAL, DOORDARSHAN (23385843)

DIRECTOR GENERAL, AIR (23421105, 23421219)

PIB MOES (FAX NO. 23389042)

UNI (FAX NO. 23355841)

D.G. NATIONAL DISASTER RESPONSE FORCE (NDRF) (FAX NO. 26105912, 2436 3260)

DIRECTOR, PUNCTUALITY, INDIAN RAILWAYS (FAX NO. 23388503)

CHIEF SECRETARY, WEST BENGAL (FAX NO. 033-22144328)

CHIEF SECRETARY, ODISHA (FAX NO. 0674-2536660)

CHIEF SECRETARY, ANDHRA PRADESH (FAX NO. 0863-2441029, 08645-246600)

ADMINISTRATOR, ANDAMAN & NICOBAR ISLANDS (FAX NO. 03192- 232656)

Sub: Deep Depression weakened into a Depression over Jharkhand

The Deep Depression over Gangetic West Bengal and adjoining Jharkhand moved westwards with a speed of 20 kmph during past 6 hours, weakened into a depression over Jharkhand and lay centred at 1730 hours IST of 02nd August, 2023 near latitude 23.3°N and longitude 85.1°E, about 20 km west-southwest of Ranchi (Jharkhand) and 190 km east-northeast of Ambikapur (Chhattisgarh).

It is likely to maintain the intensity of depression till 3rd August morning and weaken into a Well Marked Low Pressure Area thereafter. It is likely to move west-northwestwards towards northeast Madhya Pradesh and adjoining southeast Uttar Pradesh across north Chhattisgarh during next 12 hours.

Forecast track and intensity are given in the following table:

Date/Time(IST)	Position (Lat. °N/ long. °E)	Maximum sustained surface wind speed (Kmph)	Category of cyclonic disturbance
02.08.23/1730	23.3/85.1	45-55 gusting to 65	Depression
02.08.23/2330	23.3/84.0	40-50 gusting to 60	Depression
03.08.23/0530	23.4/82.9	35-45 gusting to 55	Depression
03.08.23/1130	23.5/81.8	30-40 gusting to 50	Well Marked Low Pressure Area

Warnings:

(i) Rainfall warning

Odisha: Light to moderate rainfall at most places with isolated heavy to very heavy rainfall over interior Odisha till tomorrow morning and isolated heavy rainfall on 3rd August.

Gangetic West Bengal: Light to moderate rainfall at most places with isolated heavy rainfall over Gangetic West Bengal on 2nd August.

Spatial rainfall distribution: Isolated: <25%, A few: 26-50%, Many: 51-75%, Most: 76-100%

Rainfall amount (mm): Heavy rain: 64.5 – 115.5, Very heavy rain: 115.6 – 204.4, Extremely heavy rain: 204.5 or more.

Jharkhand: Light to moderate rainfall at most places with isolated heavy to very heavy rainfall on 2nd August.

Bihar: Light to moderate rainfall at most places with isolated heavy rainfall on 2nd August.

Chhattisgarh: Light to moderate rainfall at most places with isolated heavy to very heavy rainfall over Chhattisgarh on 2nd & 3rd August and extremely heavy rainfall over north Chhattisgarh on 2nd August. Heavy rainfall at isolated places is likely on 4th August.

East Madhya Pradesh: Light to moderate rainfall at most places with isolated heavy to very heavy rainfall during 2nd to 4th and extremely heavy rainfall on 2nd & 3rd August. Heavy rainfall at isolated places is likely on 5th August.

West Madhya Pradesh: Light to moderate rainfall at most places with isolated heavy to very heavy rainfall on 2nd & 3rd and extremely heavy rainfall on 3rd August. Heavy rainfall at isolated places is likely on 4th August.

East Uttar Pradesh: Light to moderate rainfall at most places with isolated heavy to very heavy rainfall on 2nd & 3rd August and heavy rainfall during 4th to 6th August.

(v) Damage Expected over Jharkhand, north interior Odisha, north Chhattisgarh, east Madhya Pradesh and east Uttar Pradesh

- Minor damage to loose / unsecured structures.
- Some breaches in Kutcha road due to flooding.
- Damage to standing agriculture & horticulture crops.
- Minor damage to Kutcha embankments.

The next bulletin will be issued at 0230 hrs IST of 3rd August, 2023.

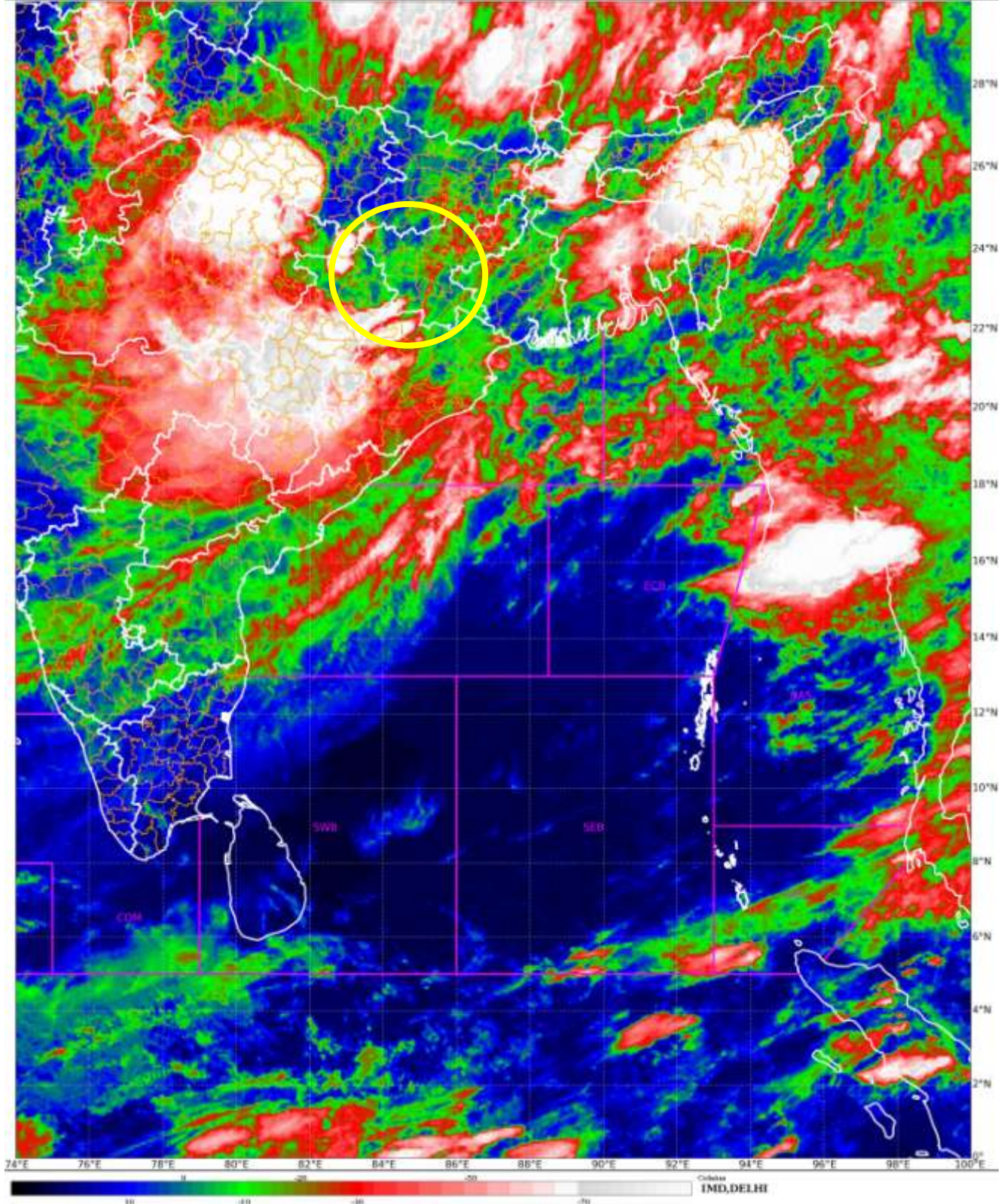
(Ananda Kumar Das)
Scientist-F, RSMC, New Delhi

Copy to: CRS, Pune/ACWC Kolkata/Chennai/CWC Bhubaneswar/CWC Visakhapatnam/MO Port Blair

Depression (23.3°N, 85.1°E)

SAT : INSAT-3D IMG
IMG_TIR1_TEMP 10.8 um
LIC Mercator

02-08-2023/(1400 to 1426) GMT
02-08-2023/(1930 to 1956) IST



Spatial rainfall distribution: Isolated: <25%, A few: 26-50%, Many: 51-75%, Most: 76-100%
Rainfall amount (mm): Heavy rain: 64.5 – 115.5, Very heavy rain: 115.6 – 204.4, Extremely heavy rain: 204.5 or more.



OBSERVED AND FORECAST TRACK OF DEPRESSION OVER JHARKHAND BASED ON 1200 UTC (1730 IST) OF 02ND AUGUST 2023.

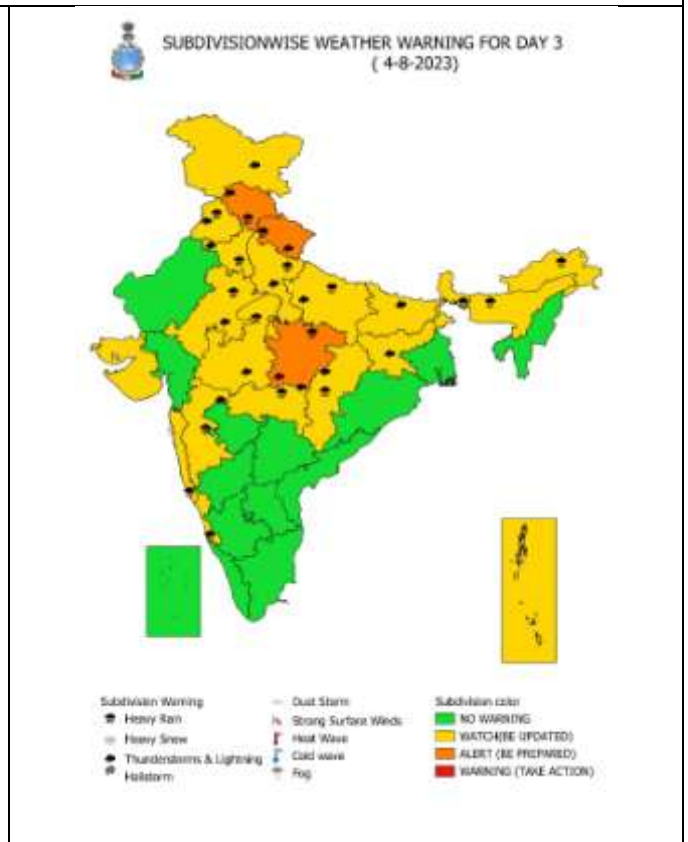
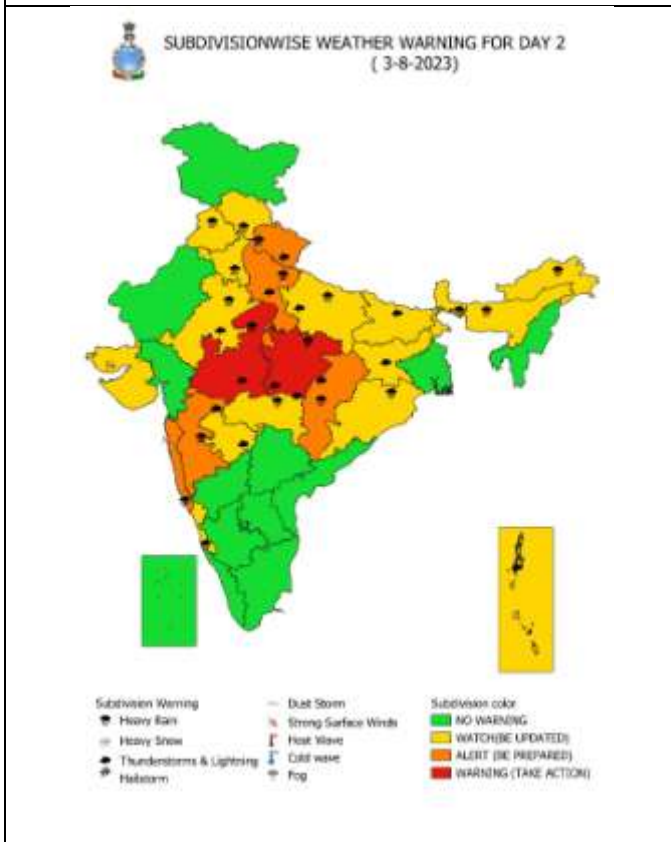
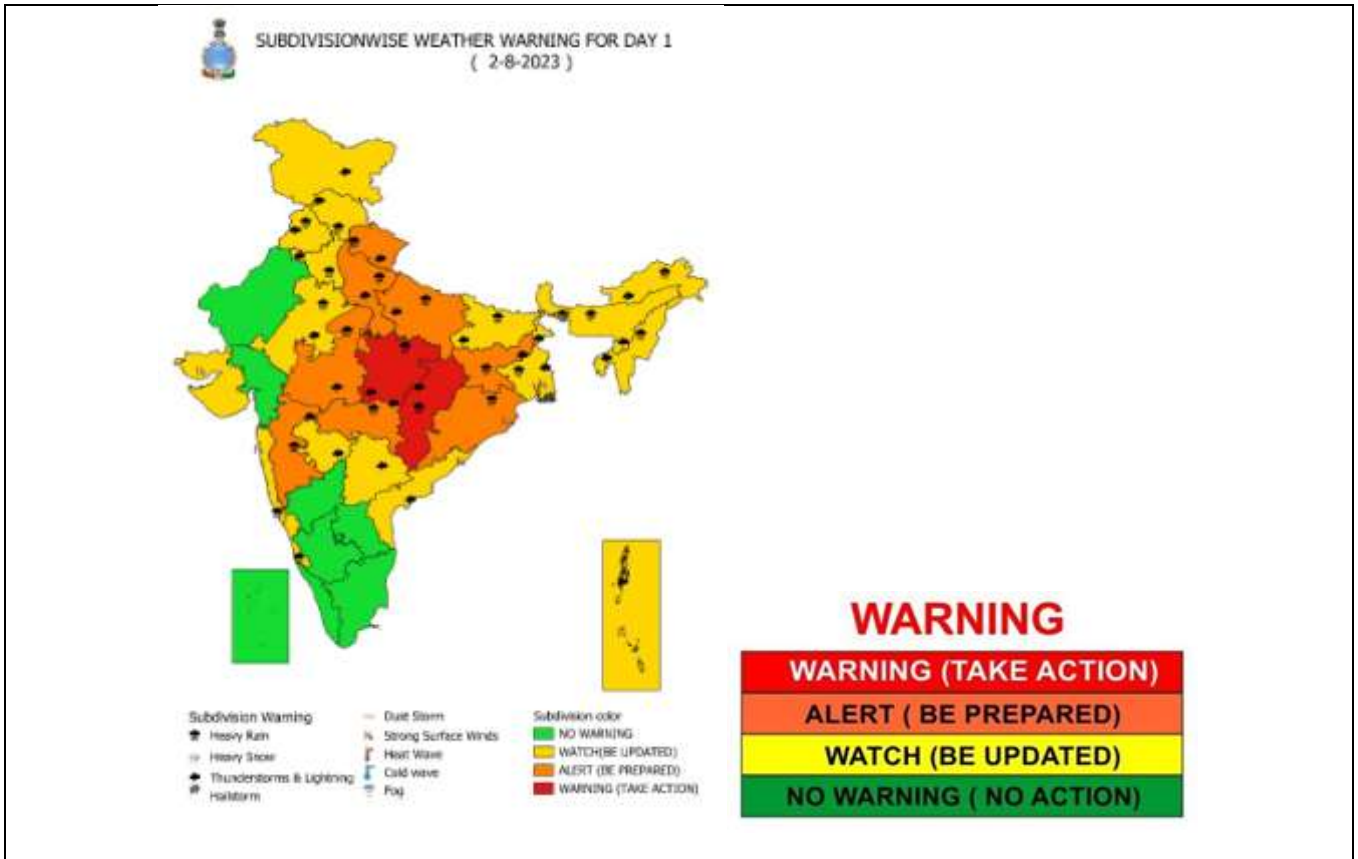


DATE/TIME IN UTC
IST=UTC + 0530
L: LOW PRESSURE AREA
WML: WELL MARKED LOW PRESSURE AREA
D: DEPRESSION (17-27 KT)
DD: DEEP DEPRESSION (28-33 KT)
CS: CYCLONIC STORM (34-47 KT)
SCS: SEVERE CYCLONIC STORM (48-63KT)
VSCS: VERY SEVERE CYCLONIC STORM (64-89 KT)
ESCS: EXTREMELY SEVERE CYCLONIC STORM (90-119 KT)
SuCS: SUPER CYCLONIC STORM (≥ 120 KT)

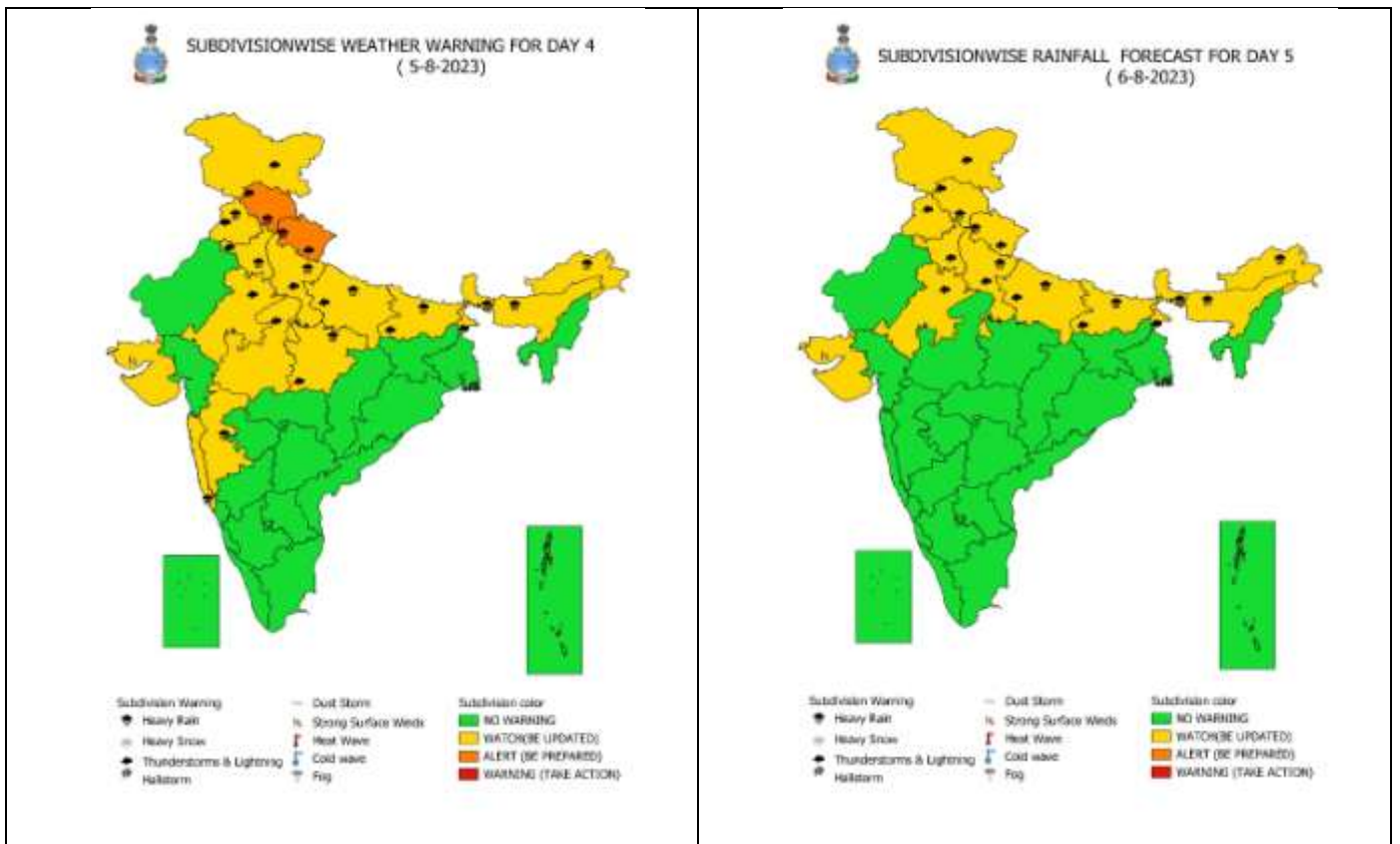
- LESS THAN 34 KT
- 34-47 KT
- ≥ 48 KT
- OBSERVED TRACK
- FORECAST TRACK
- CONE OF UNCERTAINTY

Spatial rainfall distribution: Isolated: <25%, A few: 26-50%, Many: 51-75%, Most: 76-100%
 Rainfall amount (mm): Heavy rain: 64.5 – 115.5, Very heavy rain: 115.6 – 204.4, Extremely heavy rain: 204.5 or more.

Weather Warning Graphics



Spatial rainfall distribution: Isolated: <25%, A few: 26-50%, Many: 51-75%, Most: 76-100%
Rainfall amount (mm): Heavy rain: 64.5 – 115.5, Very heavy rain: 115.6 – 204.4, Extremely heavy rain: 204.5 or more.



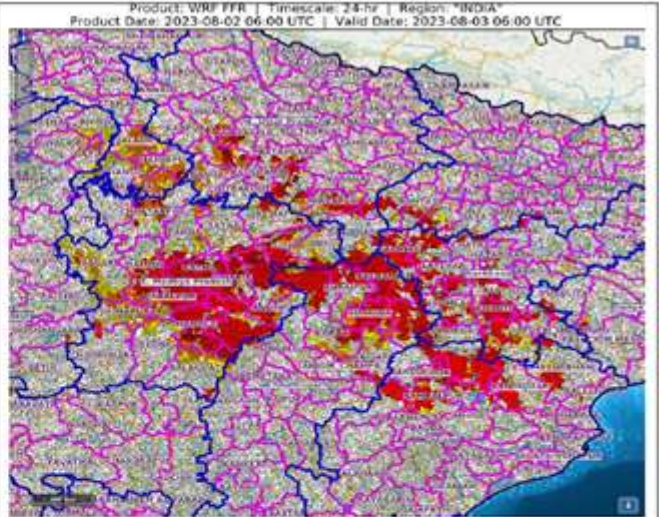
Spatial rainfall distribution: Isolated: <25%, A few: 26-50%, Many: 51-75%, Most: 76-100%
Rainfall amount (mm): Heavy rain: 64.5 – 115.5, Very heavy rain: 115.6 – 204.4, Extremely heavy rain: 204.5 or more.

Flash Flood Guidance

24 hours Outlook for the Flash Flood Risk (FFR) till 1130 IST of 03-08-2023 :

Moderate flash flood risk likely over few watersheds & neighbourhoods of East Uttar Pradesh, South-Eastern part of West Uttar Pradesh, North Chhattisgarh, East Madhya Pradesh, North-West Odisha and adjoining Jharkhand Met Sub-divisions during next 24 hours.

Surface runoff/ Inundation may occur at some fully saturated soils & low-lying areas over AoC as shown in map due to expected rainfall occurrence in next 24 hours.



Flash Flood Risk

 **High Risk (Take Action)**

 **Moderate Risk (Be Prepared)**

 **Low Risk (Be Updated)**

Spatial rainfall distribution: Isolated: <25%, A few: 26-50%, Many: 51-75%, Most: 76-100%
Rainfall amount (mm): Heavy rain: 64.5 – 115.5, Very heavy rain: 115.6 – 204.4, Extremely heavy rain: 204.5 or more.